

# THE DOOR STORE

Hardware | Iron | Architecturals | Design

Canadian House & Home June 2008

CANADIAN  
**HOUSE & HOME**  
CANADA'S MAGAZINE OF HOME & STYLE

JUNE 2008

SUMMER GIFT GUIDE  
50 UNDER \$50

# Cheap Chic

**5 FABULOUS HOMES WITH  
REAL-LIFE BUDGETS**

Display Until June 9 \$5.95

7 78624 70104 6 06

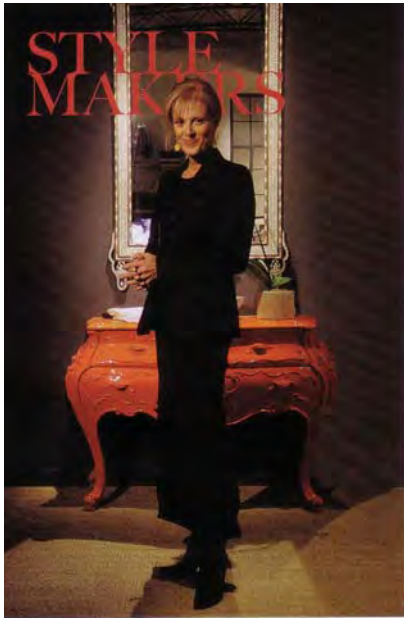
www.houseandhome.com

Turn family photos into art

# THE DOOR STORE

Hardware | Iron | Architecturals | Design

Canadian House & Home June 2008



## LYNDA REEVES' CITY LOFT

**What was the vision for this space?**  
I wanted to create a place to live, work and entertain without compromising my taste and personality. It's a way to downscale and not lose your glamour. I was determined to find a way to put French chairs and china in a loft without it looking silly!

**What are the hallmarks of this look?**  
Height: the ceilings have to be lofty. Statement furniture stands out because of its finish or strong lines or because it's symbolic of a period. Strong, graphic patterns, shocking colour combinations and individuality — there are no full sets of anything.

**How did you keep the loft from feeling cramped?** We kept the space as one big room instead of carving out a separate guest room. We isolated only the toilet and shower — it's very Japanese.

**What's your secret for open-concept design?** We approached each wall as a separate vignette that could serve as a focal point and visually stand on its own. It's a good way to decorate because it breaks a space down into manageable pieces. — T.S.

**HH** See more of Lynda's chic city loft at [houseandhome.com](http://houseandhome.com)



The living area features an oversized bulletin board and sculptural Jonathan Adler floor lamp to help fill the vast vertical spaces. Desk, South Hill Home; desk chair, Eite; ottoman, Absolutely Inc.; armchairs, Crate & Barrel; African artifacts, Kiondo; TV, DVD player, Sony.

**LEFT:** The shower and toilet are tucked behind this feature wall where an ornately carved chest was transformed into a vanity and topped with a Martha Sturdy resin bowl used as a sink. Mirror, Constantine; chest, Terence Conran; wall colour, Beauty Mark (P216-3), Para. **BELOW, LEFT:** The leggy work table and stainless steel shelving offer kitchen prep and storage space against a wall of

glittering tiles. Table, Bulthaup; tiles, Ciot; lamps, Lucky 7 Lampwerks; dog bed, House & Home; chair, Têlo. **RIGHT:** Bold colours convert two chairs into statement pieces. Chairs, LA Design; urn, stand, China Arts City. **BOTTOM:** A suzani throw sets the room's sophisticated tone. Chandelier, screen, South Hill Home; chair, Têlo; bed, Eite; wall colour, Sno-White (1807-4), Para.



SEE SOURCE GUIDE